



the simple solution
for isolating
IS interface units

MTL5500 SERIES



- ◆ **Compact modular design with DIN rail mounting**
- ◆ **Low cost per channel**
- ◆ **Full input/output/power supply isolation**
- ◆ **Broken line and earth fault protection**
- ◆ **Simple installation and maintenance using plug-in connectors**
- ◆ **High packing density**
- ◆ **No high-integrity earth needed**
- ◆ **Compatible with MTL5000 Series**

MTL5500 Series isolating IS interface units offer a compact and easy-to-use means for communicating safely with process measuring, indicating, actuating and local control equipment in hazardous areas. The range of models handle analogue and binary signals in both directions, amplifying or otherwise conditioning them as required and at the same time providing certified explosion protection for equipment and wiring in all zones and all explosive atmospheres.

The MTL5500 Series modules are versatile yet simple to apply; use the latest technology and yet are well proven. These contrasting attributes stem from the progression of MTL expertise in the design and manufacture of isolators for intrinsic safety and the application of innovative technology to achieve the required separation and segregation of the circuits. The MTL5500 (DIN rail mounting) and MTL4500 (backplane mounting) isolators share a common design and manufacture of the internal electronics, differing only in the mechanical mounting and connection methods.

Key features of the MTL5500 Series are ease of application, high operational integrity and reliability, and low installed cost. Full 3-port isolation between the input, output and power supply circuits eliminates the need to think about relationships to earth, makes system hook-ups easier to arrange, and allows hazardous-area circuits to be left floating or earthed at any one point.

Where space is at a premium, high packing densities are essential. With a unit width of 16mm, and with many units providing multiple channels (and hence a lower cost per channel), the MTL5500 Series takes up a minimum of space – which leaves more for other process control equipment. Where older installations are being updated, there may be a need for more channels – but within the existing space. The MTL5500 Series can provide the answer, fitting extra units and channels into a space formerly occupied by bulkier isolators.

The MTL5500 clips quickly onto DIN rail, so it is compatible with the industry-standard mounting system. Wiring is simplified by plug-in safe- and hazardous-area connectors, and a power plug which accepts a power bus; it all leads to quicker insertion, fewer wiring errors and trouble-free, tidier installations.

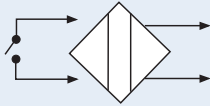
The MTL5500 Series is designed for reliability. It builds on the proven success of the MTL2000, 3000, 4000 and 5000 Series to bring the benefits of new developments in galvanic isolation without compromising the reliability of the designs from which it has evolved. It is designed from the outset to meet all relevant European Directives. Uniform appearance and connectability of the units and a comprehensive range of accessories and enclosures make planning a pleasure for the user.



MTL5500

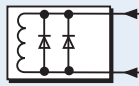
I/O MODULES

by application



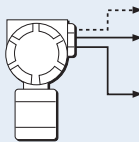
DIGITAL INPUT

Part Number	Functions
MTL5510	4ch DI solid-state output
MTL5510B	4ch DI multifunction solid-state output
MTL5511	1ch DI relay output
MTL5513	2ch DI solid-state output
MTL5514	1ch DI relay output + LFD alarm
MTL5516C	2ch DI with changeover relay output
MTL5517	2ch DI relay output + LFD alarm



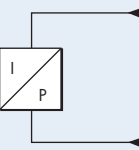
DIGITAL OUTPUT

Part Number	Functions
MTL5521	Loop powered solenoid driver, IIC
MTL5522	Loop powered solenoid driver, IIB
MTL5523	Solenoid driver with LFD
MTL5524	Switch operated solenoid driver
MTL5525	Loop powered solenoid driver low power



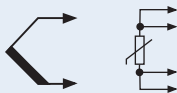
ANALOGUE INPUT

Part Number	Functions
MTL5541	1ch 2/3 wire transmitter repeater
MTL5544	2ch 2/3 wire transmitter repeater



ANALOGUE OUTPUT

Part Number	Functions
MTL5546	1ch 4-20mA smart isolating driver + LFD
MTL5549	2ch 4-20mA smart isolating driver + LFD



TEMPERATURE INPUT

Part Number	Functions
MTL5575	Temperature converter

GENERAL

Part Number	Functions
MTL5599	Dummy isolator

