

Models-2032,2032HP,2033/F, Filled System Stainless Steel Gauges

Case

AISI 304 Stainless Steel
Bezel Stainless Steel (Bayonet type).
Weatherproof Construction

Socket + Element

AISI 316 Stainless Steel

Thread

1/4", 3/8", 1/2" NPT, BSP, BSPT

Movement

Stainless Steel

Dial

White Aluminium (Black Printing)

Pointer

Black Aluminium

Window

Sheet Glass

Standard Size

100, 150mm

Accuracy class

+/-1.5%

Scale Range

Vacuum to 600 bar

Ordering information

State:- Pressure gauge model
/ Nominal size / Scale range
/ Size and location of connection
/ Optional extras reqd.

Optional extras

AISI 316 Stainless steel case.
White plastic dial (Black Printing).
Micro adjustable pointer / Black Finish.
Monel to Nace MR-01-75 wetted parts.
Laminated safety glass / Perspex window.
Customer logo.
Liquid filling.
Vibrageauge®
Snubbageauge®
Further options: on request

Note:- Cooling syphon recommended between diaphragm chamber and gauge for process temperatures above 60 deg C.

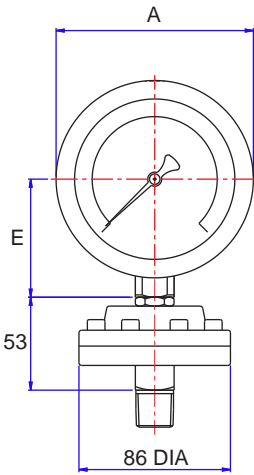


Model - 2032

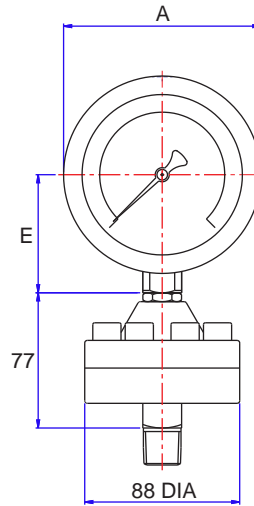
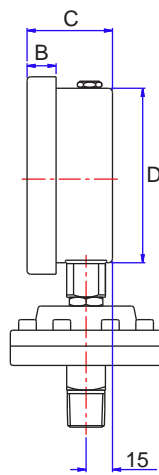
Application	Fill Fluids & Temperature Ranges
Vacuum	Silicone D.C 704 0 to 250 deg C
Standard	Silicone 200 / 100 -40 to 200 deg C
Low Temp	Flourinert F.C.77 -100 to 50 deg C
High Temp	Silicone D.C 550 -40 to 315 deg C
Oxygen	Galden D05 -20 to 140 deg C
Food	Neobee M20 -15 to 150 deg C
Other fill fluids available	

**Models-2032,2032HP,2033/F,
Filled System
Stainless Steel Gauges**

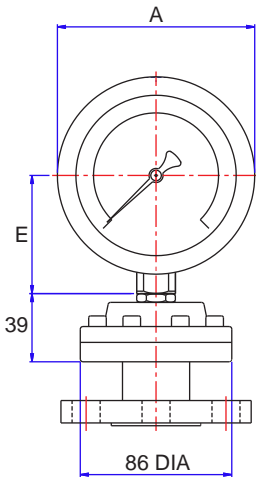
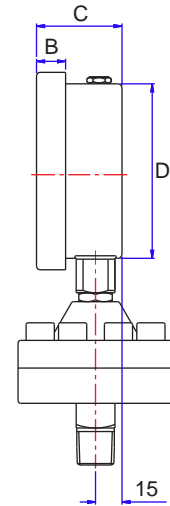
Note:- Dimensions shown are for a standard pressure gauge.



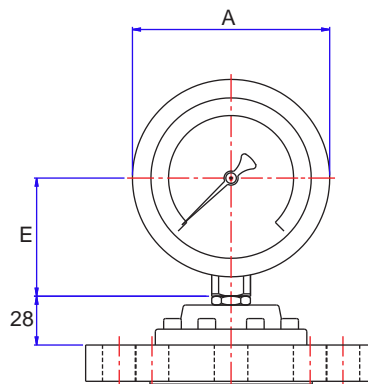
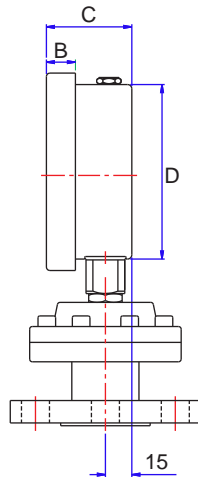
Rated to 100 BAR
Model. 2032



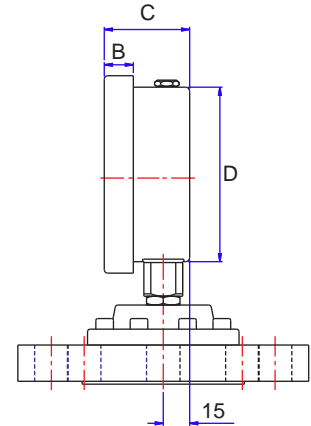
Rated to 400 BAR
Model. 2032/HP



Flange Mounted
Model. 2033/F



Flange Mounted
Model. 2033/F
(Flange Sizes - (2") 50mm x 150 lb & above)



Dial Size	A	B	C	D	E
100mm	112	16.5	48.5	99	67
150mm	163	19.5	48.5	148	96

We manufacture a wide range of instruments to customer's special requirements
We shall be pleased to discuss and advise on your specifications.

Specifications and dimensions given in this leaflet represent the state of engineering at the time of printing.
Engineering modifications may take place without prior notice.